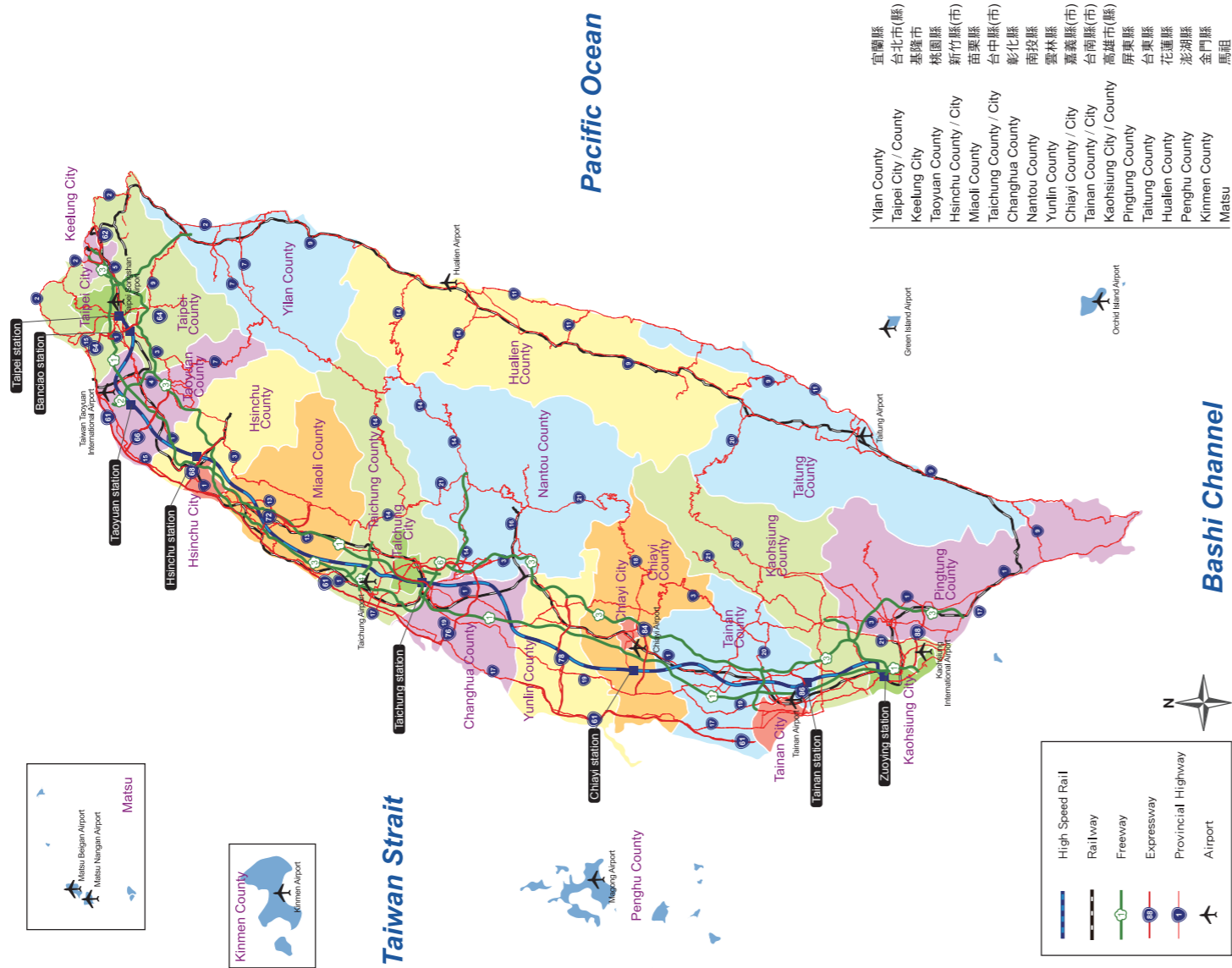


Taiwan Map



Employment/Investment

Unit	Telephone/Website
Invest in Taiwan Portal	02-2382-0493 http://investintaiwan.nat.gov.tw/en/
Work Permit Application Bureau of Employment and Vocational Training, CLA	http://www.evta.gov.tw/eng/home/index.asp
Labor Insurance Bureau of Labor Insurance, CLA	02-2396-1266 http://www.bli.gov.tw/en

Healthcare

Unit	Telephone/Website
Health Information Network Service Center, Department of Health	02-2346-5255 / 0800-231497 http://www.doh.gov.tw/EN2006/
Centers for Disease Control, Department of Health	02-2395-9825 (Operator) 1922 (CDC Disease Reporting and Consulting Center) http://www.cdc.gov.tw/mp.asp?mp=5
Bureau of National Health Insurance	02-2706-5866 (Operator) 0800-030598 (Health insurance enquiry) http://www.nhi.gov.tw/english

Living in Taiwan

Unit	Telephone/Website
Bank of Taiwan	0800-025168 http://www.bot.com.tw/English
Central Weather Bureau	02-2349-1234 (Weather information) 02-23491168 (Earthquake information) http://www.cwb.gov.tw/eng
Chungwa Post Co.	0800-700365 / 04-354-2030 (Cell phone use) http://www.post.gov.tw/post/internet/u_english
Chungwa Telecom Co.	0800-080123 (General customer service) http://www.cht.com.tw/CHTFinalE/Web/

Useful Telephone Numbers

Unit	Telephone
Fire and Ambulance	119
Robbery Reporting	110
Weather Bureau	166
Highway Traffic Conditions	168

Unit	Telephone
Telephone Malfunction	112
Time Reporting	117
English Directory Assistance	106
International Operator Assistance	100